



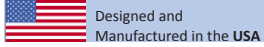
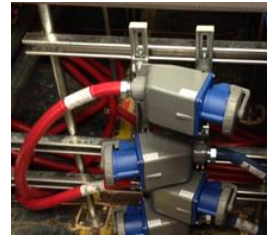
POWERWHIPS
BY ELECTROL

IEC PowerWhip Options – Under Floor

Amperage range: **16A to 125A** Voltage range: **120V to 600V**

Conduit Type: **Liquidtight Flexible Steel Conduit** (U.L. and CSA Approved)

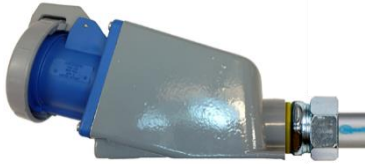
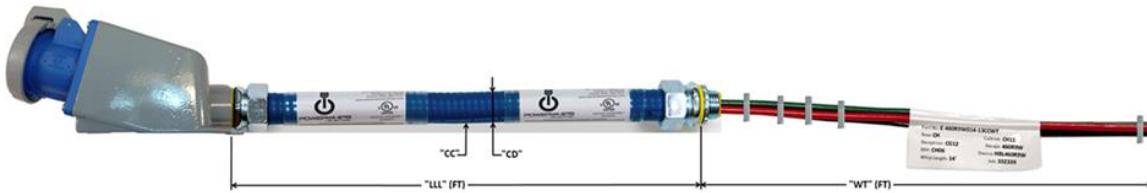
Conduit Size: **1/2" to 2" Dia.** Conduit Colors: **11 Colors**



Designed and
Manufactured in the USA

PowerWhip Assembly Options: Use www.electrolpowerwhips.com to configurator your order.

UL US
LISTED
WIRING ASSEMBLY
E466267



Conduit Assembly Type LA,
IEC Receptacle (R) with Back Box,
Painted or Unpainted



Conduit Assembly Type LA,
IEC Inlet (B) with Back Box,
Painted or Unpainted



Conduit Assembly Type LA,
IEC Plug (P) with Liquidtight
Conduit Adapter



Conduit Assembly Type LA,
IEC Connector (C) with Liquidtight
Conduit Adapter

IEC Device Options:



IEC Receptacle (R)
Back Box Required



IEC Inlet (B)
Back Box Required



IEC Connector (C) LT Conduit
Adapter Kit Required



IEC Plug (P) LT Conduit
Adapter Kit Required

IEC Back Box Options:



Die Cast
Metallic Box



Injection Molded
Non -Metallic Box



Liquidtight Conduit
Adapter Kit



Metallic Liquidtight
Fittings

IEC LT Conduit Options:



U.L. and CSA
Approvals

Code "CC"	Color
BK	Black
BL	Blue
BN	Brown
GN	Green
GY	Grey
OR	Orange
PK	Pink
PL	Purple
RD	Red
WT	White
YL	Yellow



Liquidtight Flexible Steel Conduit



IEC Accessories Options:



Mounting Kit for Die
Cast Metallic Box



Mounting Kit for Injection
Molded Non -Metallic Box

N77 W30924 Hartman Ct
Hartland, WI 53029
Phone (262) 966-3741
www.electrolpowerwhips.com

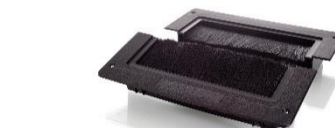
UL US
LISTED
WIRING ASSEMBLY
E466267

Prefabricated Power Distribution Assembly

Part No: **E-FW-10-2P3WLL-11CCWT-DE**
Row: **HC** Cabinet: **HC08**
Recept Loc: **CG08**
RPP: **HC06**
Whip Length: **LLL'** Job: **333088**



Custom Labeling



Air Flow Management



Circuit Breakers (QOB or QO)

upsite
technologies